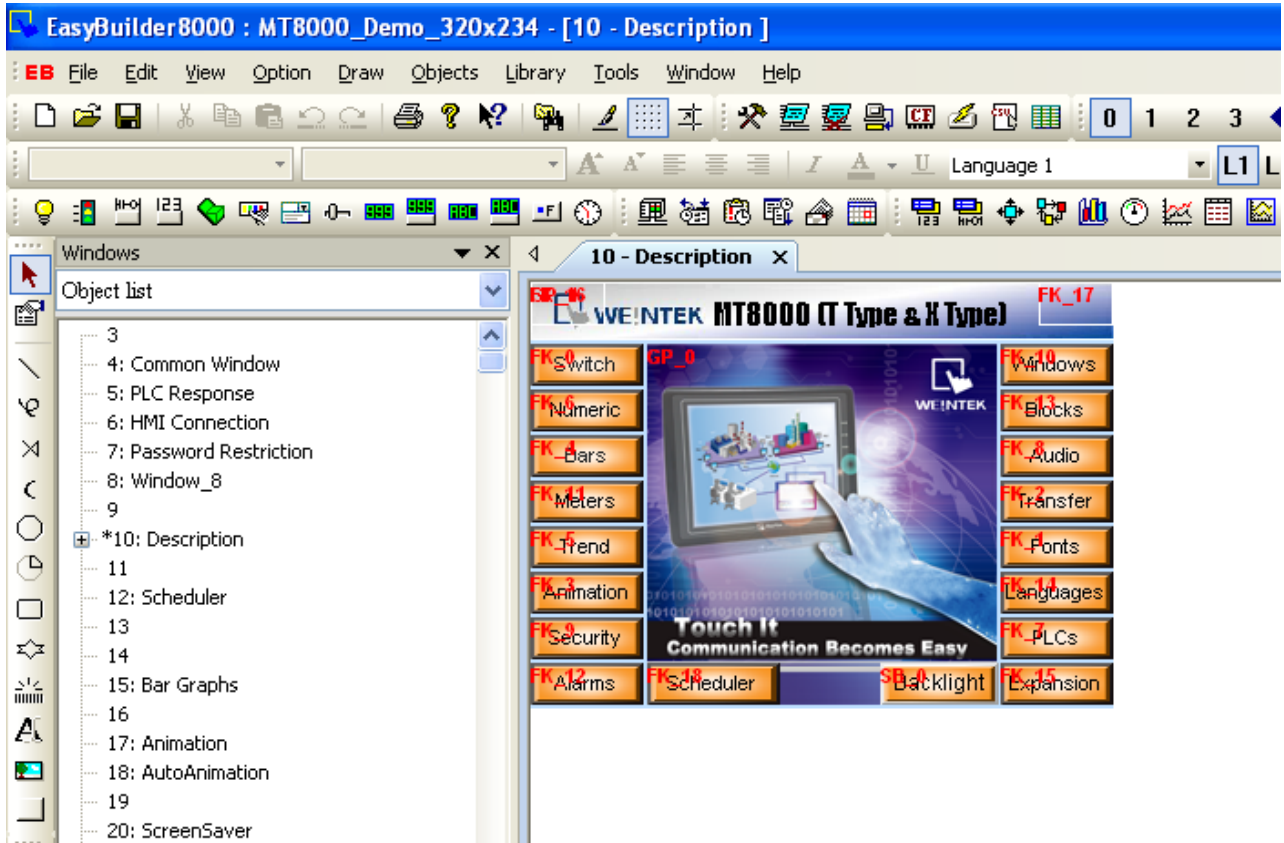


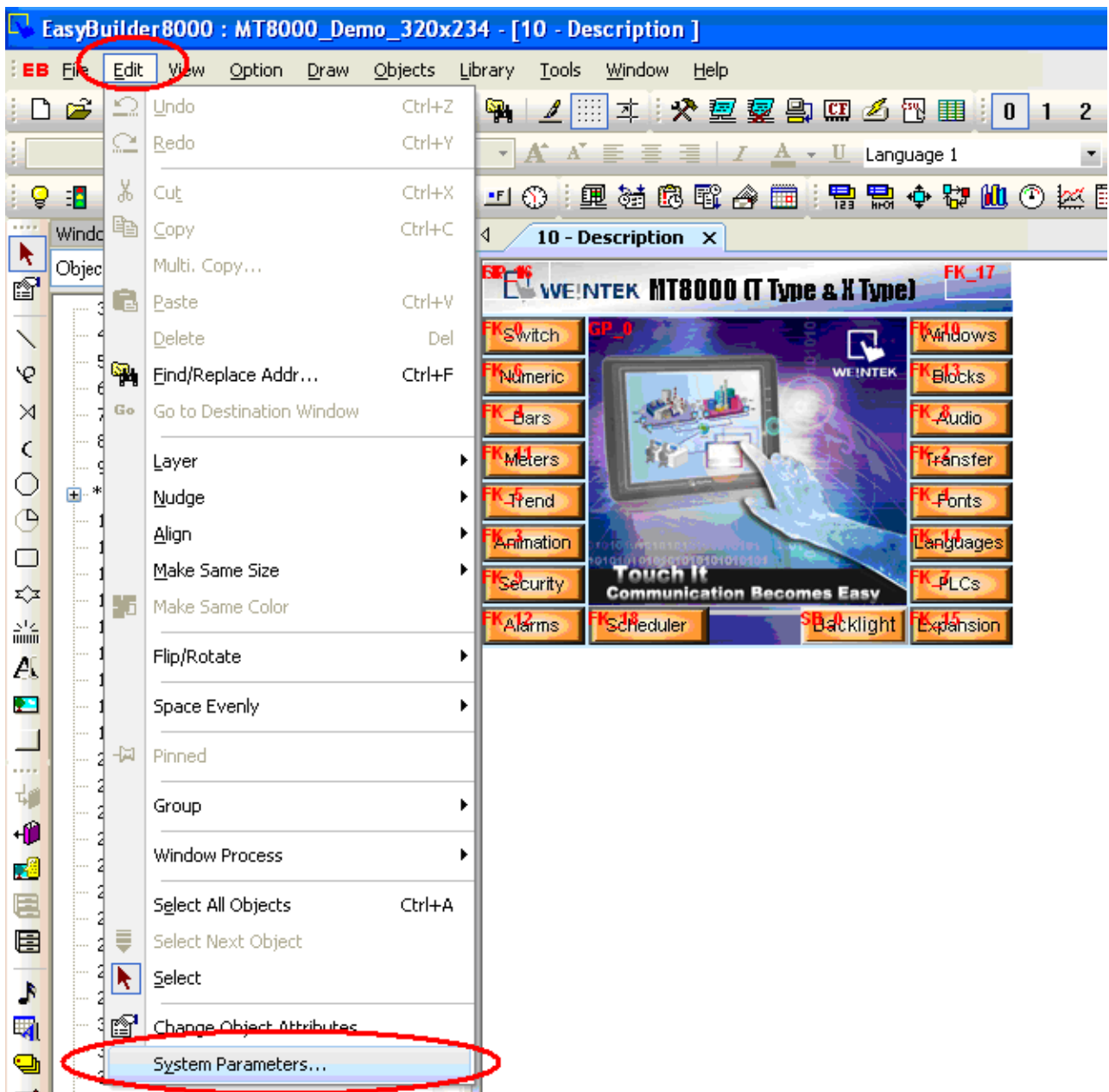
Switch MT8000 Project between HMI Models

(Take the switch between MT8056T (320*234) and MT8104X (640*480) for example)

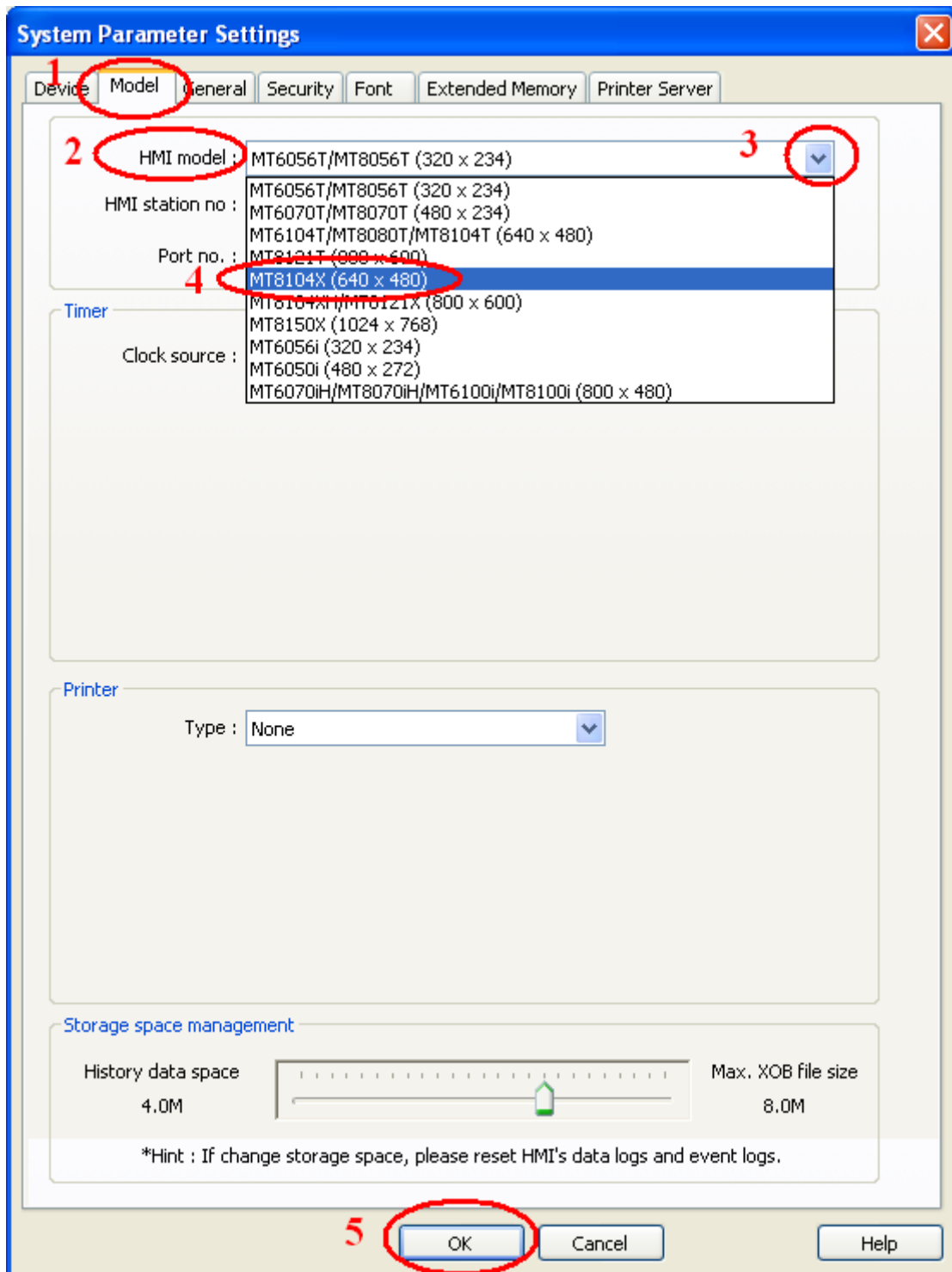
1. The following picture is the MT8056(320*234) project before switching the HMI model.



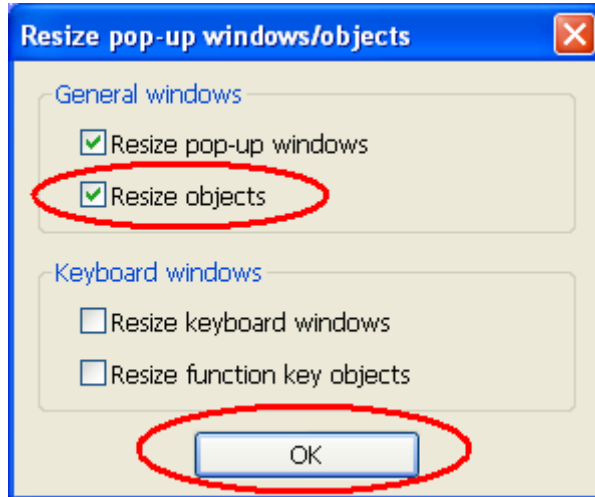
2. Click "Edit", select "System Parameters";



3. Switch to the “Model” tab, select MT8104X (640*480) from the “HMI model” pull-down list.



4. Click “OK” button. When the “Resize pop-up windows/object” dialog appears, check the options that you require. For example, if you want to resize objects, just check the “Resize objects” check box in the “General windows” group. The objects of the project will be resized in scale.



- Click “OK” button to complete the switching process between HMI models. The following picture shows the MT8104X (640*480) project after switch.

