

# Additional data for PCM001Z V100

(PCM001Z\_ExD\_0904.zip)

## 1. The contents of additional data

By executing the installer, the following inverter types are added to PCM001Z (V100) already installed in PC.

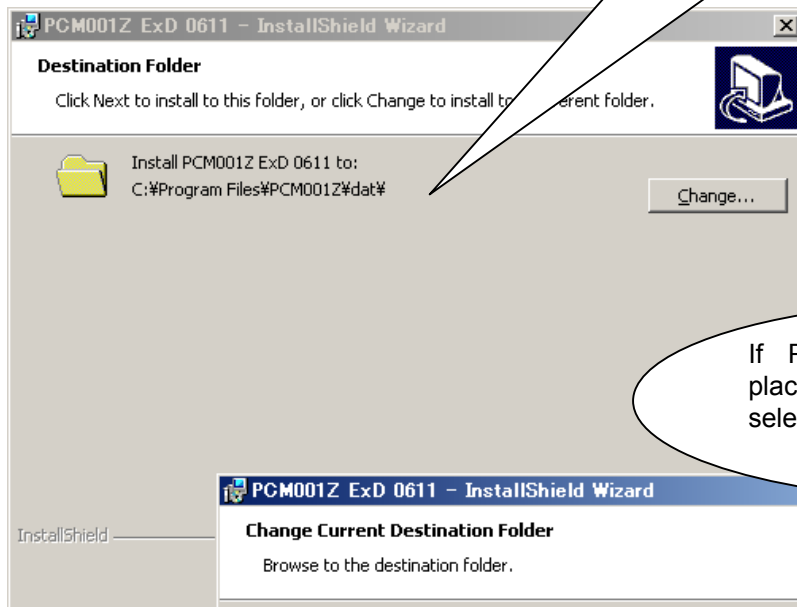
- VFnC3(V100) --- Not included help file of each parameter
- VFAS1(V130,V134,V136,V142,V150)
- VFPS1(V612,V614,V620,V650)
- VFFS1(V108,V114,V115,V116,V117)
- VFS11(V116,V117,V118,V119)
- VFnC1(V120,V121)

## 2. About the Install and Uninstall

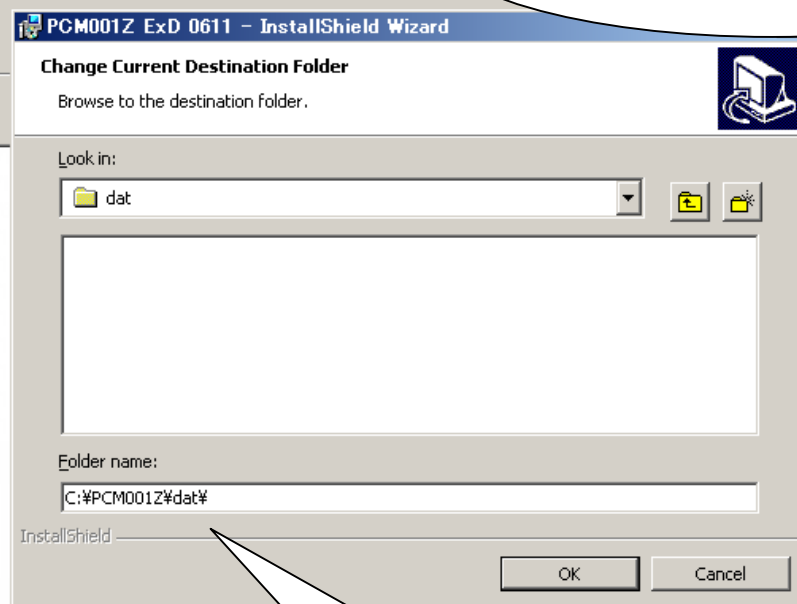
- In case of installing “PCM001Z\_ExD\_0808”, “PCM001Z\_ExD\_0803”, “PCM001Z\_ExD\_0611”, please uninstall this program, first.
- Installation is performed by executing "setup.exe."
- The installation place should choose the <dat> folder of installed PCM001Z.  
Default installation place of PCM001Z: C:\Program Files\PCM001Z (refer to the next page).
- “PCM001Z\_ExD\_0904” is only for PCM001Z (V100). Do not install to the previous version.

**Install folder**

\* It's default installation folder of PCM001Z



If PCM001Z is installed in other places, please click this button and select the <dat> folder of PCM001Z.



Example.  
When PCM001Z was installed at  
"C:\Program Files\PCM001Z"